

output pulsing - revenue electricity meters

what is output pulsing?

When nominated as your meter provider, Metering Dynamics can enable your contestable electricity meter to provide output pulsing capability.

Pulsing outputs can then be sourced directly from the metering infrastructure to provide consumption data directly to Building Management Systems.

In regards to an electricity meter, a pulse output refers to an amount of energy passing through the meter. Each pulse represents a number of Watt-Hour/s (Wh) which can be used to calculate kWh consumption.

Output pulsing capability feeds raw pulses directly to your third party devices, allowing you to obtain your usage data in 'Real Time'

Metering Dynamics can provide access to output pulsing functionality directly from your electricity meter.

Metering Dynamics output pulsing options

Metering Dynamics can enable output pulsing on contestable electricity meters as well as sub-metered electricity meters.

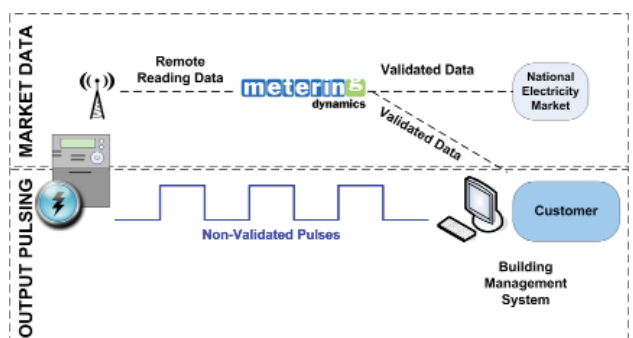
There are two output pulsing options available;

- one pulse output - watt-hour pulse per metering point
- three pulse outputs - watt-hour pulse per metering point
- var-hour pulse per metering point
- 15 or 30 min time synchronisation

data quality

Meter data received through pulse output interfaces differs from market data as it is raw data, and as such, does not pass through any validation process, nor is it warehoused for security and back up purposes.

The diagram below shows the differences in data obtained from Output Pulsing and data released to the market..



To find out what Metering Dynamics can do for your business, contact us:

Call 1300 792 611

Email sales@meteringdynamics.com.au

Visit www.meteringdynamics.com.au

output pulsing



how does Metering Dynamics enable output pulsing from a meter?

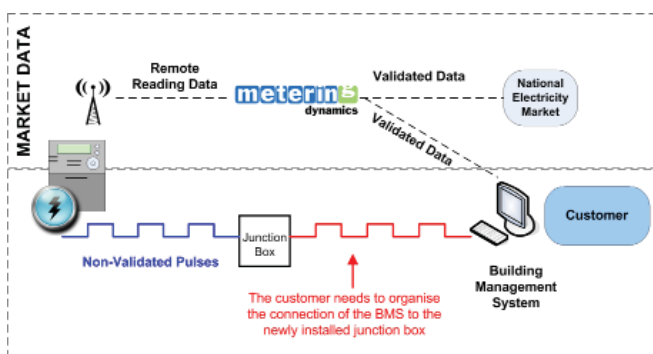
The process to enable and set-up Output Pulsing will vary depending on the equipment and current set-up on site.

Metering Dynamics will enable output pulsing based on the following scenarios;

scenario 1 - there is currently no output pulsing capability on site (new install)

For new installs or where a customer is upgrading to output pulsing, Metering Dynamics will configure the meter so that it is output pulse capable and install a pulsing cable and a junction box on site.

You will be required to organise an electrician to connect any building or control systems to the newly installed junction box.



NOTE: Metering Dynamics must be the nominated meter provider in order to supply output pulsing

Standard Pulse Output Technical Specifications:

Type: SØ (Compliant with IEC 62053-31 1998-01)
Voltage: 27VDC (max)
Current: 15mA (max)
Pulse Width: 1ms to 100ms programmable (default 100ms)

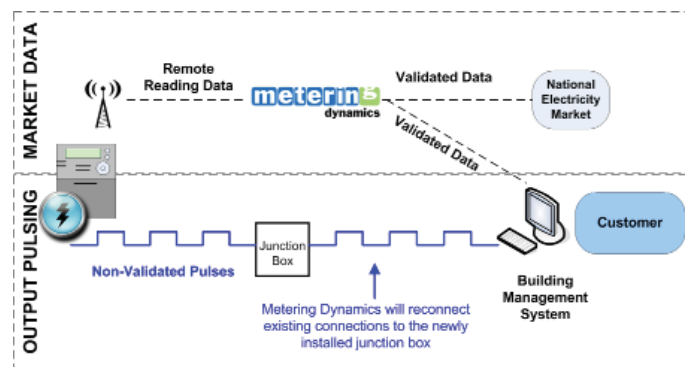
intelligent.

Scenario 2 - Output Pulsing capabilities are currently available on site

If Output Pulse capabilities are currently available on site, Metering Dynamics will configure the meter so that it is Output Pulse capable and visit your site to install a pulsing cable and a junction box.

Metering Dynamics will also reconnect any existing connections to building or control systems to the newly installed junction box.

In this instance you will not be required to organise an electrician to visit your site as the set-up will be complete



NOTE: Metering Dynamics must be the nominated meter provider in order to supply output pulsing