

# HOW DO I READ MY RESIDENTIAL SMART METER – EDM1 Mk10A



This reference guide explains what data you can see on your EDM1 Mk10A meter and how to read it. You can identify the type of meter by the model number shown on the front of the meter.



● **Display Panel**

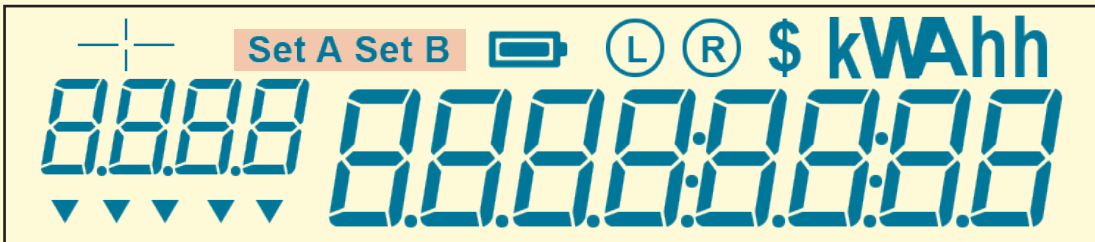
● **Select Button**

Access features of the meter by pressing the “SELECT” button (located below the billing reset button on the meter).

By continuing to press the “SELECT” button, a user can scroll through a variety of information in the display panel.



## THE METER HAS TWO SETS OF DISPLAYS ‘SET A’ AND ‘SET B’.



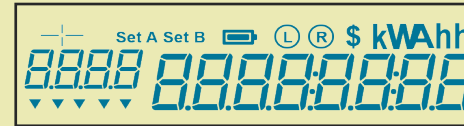
**SET A** CONTAINS THE MAIN USER DISPLAYS - DATE, TIME, ELECTRICITY, ETC.

**SET B** CONTAINS TEST/SUPPLEMENTARY INFORMATION

The number of registers shown depends on how the meter has been configured to manage services at your premises - e.g. house supply, slab or underfloor heating, electric hot water systems, solar PV etc.

### METER DISPLAY

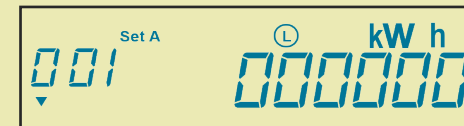
### EXPLANATION OF READING



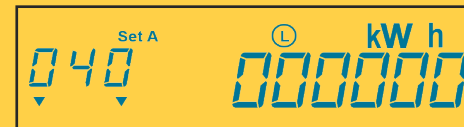
**Display Test Screen** - The screen with all segments illuminated indicates that all elements of the display are functioning correctly



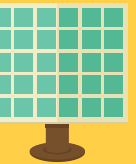
**Date and Time** - This register shows the current date and time alternatively



**Nett Consumption kWh** - This displays the cumulative/total electricity consumption of your premises since the meter was installed in kilowatt-hours.



**Nett Generated kWh** - This displays the cumulative/total electricity delivered back into the electricity network



For more information on smart meters, please visit our website [www.meteringdynamics.com.au](http://www.meteringdynamics.com.au)

