

HOW DO I READ MY RESIDENTIAL SMART METER – EDM1 Mk7A



This reference guide explains what data you can see on your EDM1 Mk7A meter and how to read it. You can identify the type of meter by the model number shown on the front of the meter.



● **Display Panel**

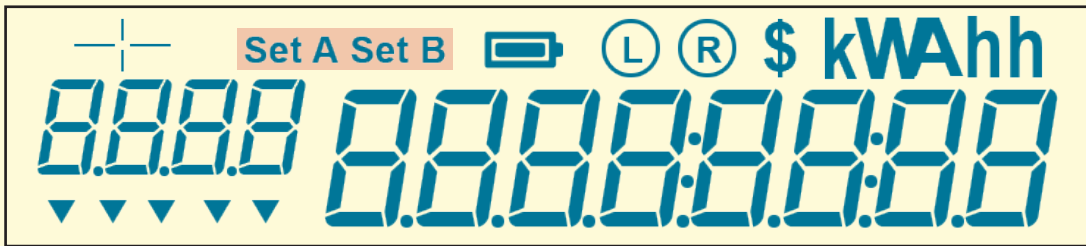
● **Select Button**

Access features of the meter by pressing the “SELECT” button (located below the green button on the meter).

By continuing to press the “SELECT” button, a user can scroll through a variety of information in the display panel.



THE METER HAS TWO SETS OF DISPLAYS ‘SET A’ AND ‘SET B’.



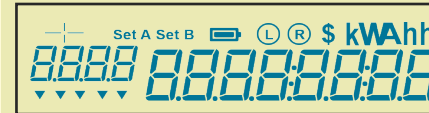
SET A CONTAINS THE MAIN USER DISPLAYS - DATE, TIME, ELECTRICITY, ETC.

SET B CONTAINS TEST/SUPPLEMENTARY INFORMATION

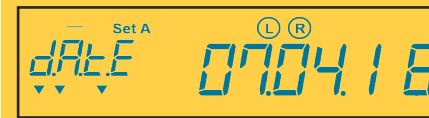
The number of registers shown depends on how the meter has been configured to manage services at your premises - e.g. house supply, slab or underfloor heating, electric hot water systems, solar PV etc.

METER DISPLAY

EXPLANATION OF READING



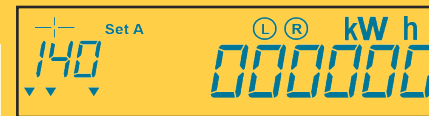
Display Test Screen - The screen with all segments illuminated indicates that all elements of the display are functioning correctly



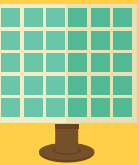
Date and Time - This register shows the current date and time alternatively



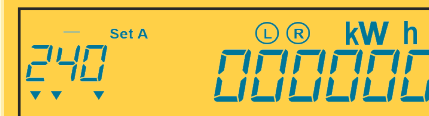
Normal Supply (Element 1) consumed kWh - This register displays the cumulative/total electricity consumption at the main circuit of your premises in kilowatt-hours



Normal Supply (Element 1) generated kWh* - This register displays the cumulative/total electricity delivered back into the electricity network



Controlled Supply (Element 2) consumed kWh - This register displays the cumulative/total electricity consumption of that second element in kilowatt-hours



Controlled Supply (Element 2) generated kWh* - This register displays the cumulative/total electricity produced by the second element, delivered back into the electricity network



*Display with register 140 and 240 will be zero unless solar PV system generation is connected.

For more information on smart meters, please visit meteringdynamics.com.au

